

# LED Hazardous Location Fixtures

ENERGY EFFICIENT  
**36W-45W**  
= 150W UP TO 300W  
TRADITIONAL LAMP

ENVIRONMENTALLY FRIENDLY  
**50,000 HRS**  
LIFETIME

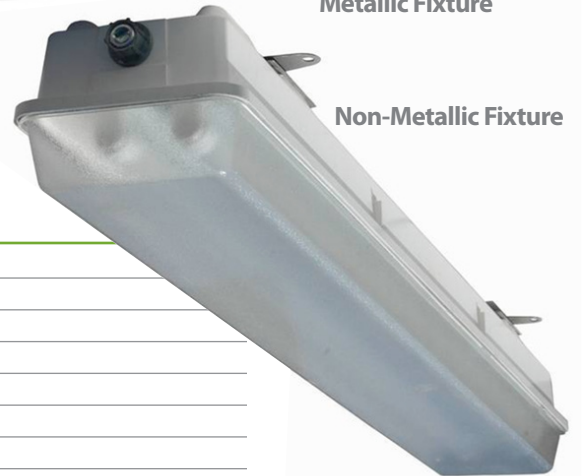
For the long run.™

## Application

Solvent and cleaning areas, paint spray booths, oil and gas drilling applications, aircraft maintenance, chemical manufacturing, waste treatment plants, oil and gas refining and processing. Energy efficient, environmentally friendly, and LEED compliant.



Metallic Fixture



Non-Metallic Fixture

## Hazardous Location 2-Tube EXPILT2X18W6K

<b>Dimensions:</b>	See Diagram (on Back)
<b>Weight:</b>	33 lbs
<b>Color Temp:</b>	5500K - 6000K
<b>CRI:</b>	76.8%
<b>Power Consumption:</b>	36 Watts
<b>Actual Power Consumption:</b>	45 Watts
<b>Voltage:</b>	AC100-240V
<b>Amps*:</b>	0.383 ARMS
<b>Operating Temp:</b>	-50C to +50C
<b>Power Factor:</b>	0.992
<b>Lumen Output:</b>	4,007 LMS
<b>Efficacy:</b>	87.9 LMS/WATT
<b>THD:</b>	80W Driver – 6.8%
<b>Lifetime:</b>	50,000 Hours
<b>Warranty:</b>	5 Year
<b>Certification:</b>	CSA approved Master Contract #253747, CE certified, UL certified, RoHS and LEED compliant

\*Amperage at 120V



EnduraliteLED™

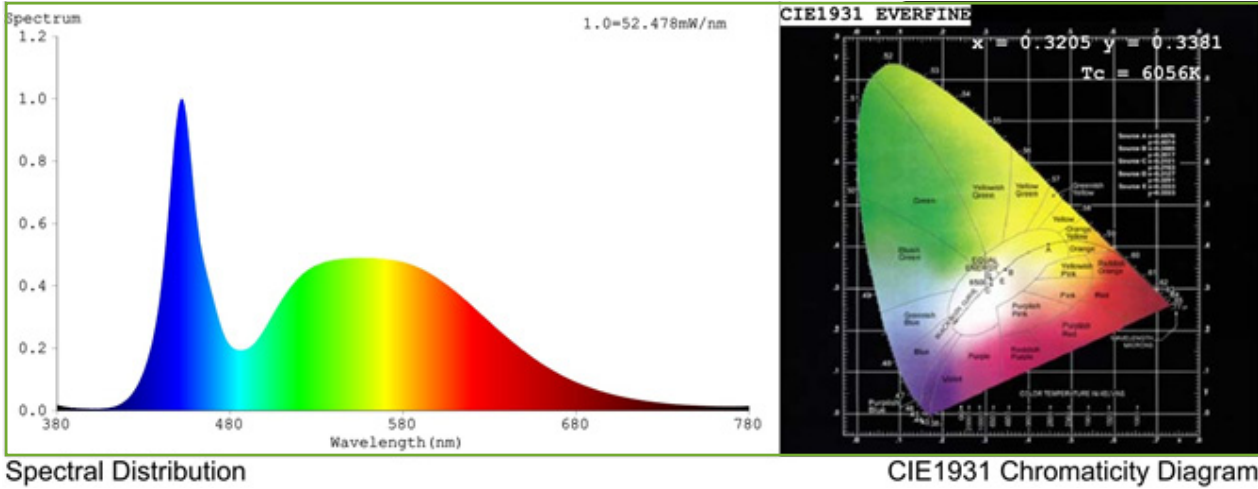
© 2010 EnduraliteLED™  
All Rights Reserved

EnduraliteLED  
PO Box 970 Goczy Avenue  
Esterhazy, SK, S0A 0X0, Canada

(306) 745-6453  
Email: [Info@EnduraliteLED.ca](mailto:Info@EnduraliteLED.ca)  
[www.EnduraliteLED.ca](http://www.EnduraliteLED.ca)

# LED Hazardous Location Fixtures Class 1, Div 2 – Groups A,B,C,D

## Spectroradiometric Parameters



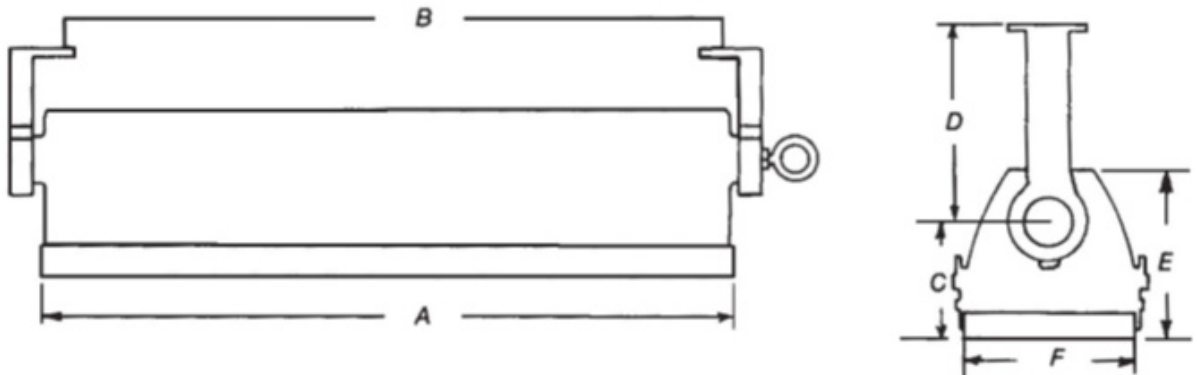
Spectral Distribution

CIE1931 Chromaticity Diagram

## Fixture Illustration:

### Dimensions

- A – 49 3/4"
- B – 47"
- C – 4 3/4"
- D – 7"
- E – 6 1/8"
- F – 6 1/8"



## Construction:

- Non-metallic Fixture: Fiber glass and plastic.
- Metallic Fixture: Extruded aluminum.

